



Providing Jobs and Prosperity in Los Angeles County

With the most jobs of any county and the second most active wells in the state, Los Angeles County is California's oil and gas industry economic impact leader.



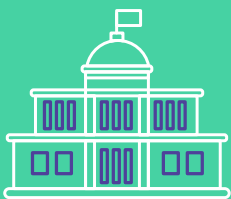
31,077

Los Angeles County residents directly employed by the oil and gas industry



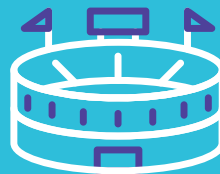
1.2%

Share of Jobs in the County



\$3.9B

State & Local Tax Revenue



77,550

Total number of jobs in Los Angeles County supported by the oil and gas industry

That's enough people to fill the Staples Center 3.7 times*

*Source: staplescenter.com



\$46.7B

Total Economic Contribution

That dollar amount is more than the gross domestic product (GDP) of Vermont (\$34 billion) and Wyoming (\$39.8 billion).*

*Source: U.S. Bureau of Economic Analysis



\$5.3B

Labor Income

A report titled "2019 Report Oil & Gas in California: The Industry, Its Economic Contribution and User Industries at Risk" examined the economic contribution of the oil and gas industry in California for the year 2017, the most recent annual data available, as well as identified user industries of refined products most vulnerable to cost increases, supply restrictions and competitive pressures from outside the state. The study was conducted by the Los Angeles County Economic Development Corporation on behalf of the Western States Petroleum Association.

To read the full report, visit wspa.org/LAEDC